

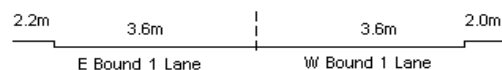
YEAR 2013

COVERAGE (B) STATION 2204

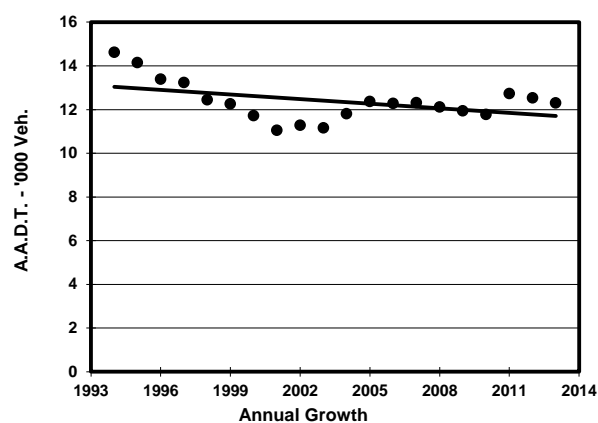
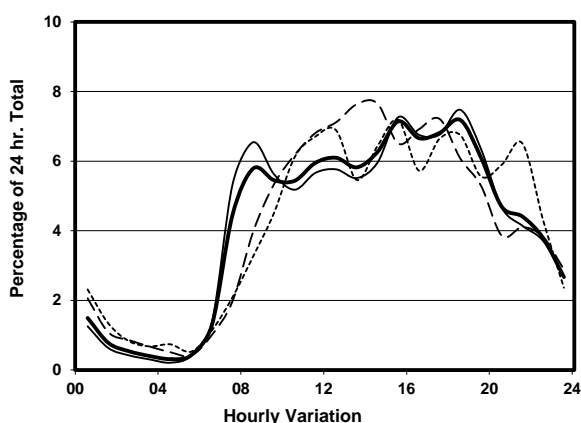
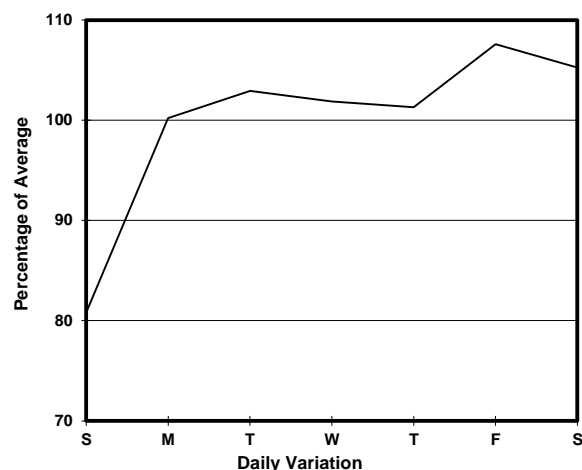
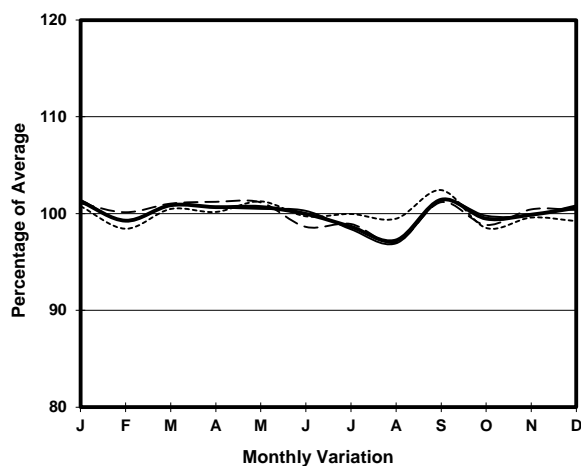
ROAD NETWORK MAJOR

ROAD TYPE DISTRICT DISTRIBUTOR

LINK YEE KING RD & LAI TAK TSUEN RD (from CLOUD VIEW RD to TAI HANG RD)



1. TRAFFIC FLOW VARIATION AND GROWTH



2. TRAFFIC CHARACTERISTICS (BY DIRECTION)

Parameter	All - Day	Mon. - Fri.	Sat.	Sun.
EAST BOUND				
A.A.D.T.	7260	7450	7750	6310
R 12 / 24 - %	71.1	71.8	71.4	66.2
R 16 / 24 - %	91.3	92.1	89.2	89.2
AM Peak Hour	0800-0900	0800-0900	0900-1000	0900-1000
One-way flow at AM peak hour	390	450	390	310
T - % (AM)	-	3.6	-	-
PM Peak Hour	1800-1900	1800-1900	1600-1700	1700-1800
One-way flow at PM peak hour	520	570	550	400
T - % (PM)	-	7.6	-	-
Prop.of commercial vehicles - 16 hr.	-	8.6	-	-
WEST BOUND				
A.A.D.T.	5040	5330	5330	3740
R 12 / 24 - %	76	76.7	76.3	70.6
R 16 / 24 - %	93.2	93.6	92.4	91.5
AM Peak Hour	0800-0900	0800-0900	0900-1000	0900-1000
One-way flow at AM peak hour	330	390	310	150
T - % (AM)	-	15.9	-	-
PM Peak Hour	1800-1900	1800-1900	1700-1800	1800-1900
One-way flow at PM peak hour	360	390	400	290
T - % (PM)	-	4.6	-	-
Prop.of commercial vehicles - 16 hr.	-	7.6	-	-

3. OTHER INFORMATION AND COMMENT

4. Vehicle classification and occupancy - Monday to Friday

Time		Class of vehicle									
		Motor	Private	Taxi	Private	PLB	Goods veh.		Non	Fr. Bus	
		Cycle	Car		LB		Light	M & H	Fr. Bus	SD	DD
0700-0800	Pro	2.2	39.0	14.5	8.9	8.9	3.3	0.0	15.6	3.9	3.6
	Ocp	1.5	1.7	2.2	6.1	10.4	1.3	0.0	13.8	23.5	14.8
0800-0900	Pro	1.0	61.9	12.0	5.8	4.3	5.3	0.0	6.7	1.7	1.3
	Ocp	1.0	1.5	2.0	4.9	13.9	1.6	0.0	4.6	23.6	11.3
0900-1000	Pro	1.6	66.6	16.0	0.5	4.3	5.3	0.0	2.1	2.0	1.6
	Ocp	1.0	1.5	2.0	5.0	15.1	1.3	0.0	1.0	21.9	6.3
1000-1100	Pro	1.4	60.1	18.4	0.0	4.8	7.5	0.7	3.4	2.0	1.7
	Ocp	1.0	1.6	1.7	0.0	12.1	1.5	2.0	1.2	18.0	6.5
1100-1200	Pro	1.5	42.6	33.8	1.5	3.7	9.5	0.0	4.4	2.0	1.1
	Ocp	1.0	1.6	1.7	1.5	6.6	1.7	0.0	2.8	15.8	7.0
1200-1300	Pro	1.3	55.4	23.2	1.9	7.1	5.2	0.0	3.2	1.6	1.1
	Ocp	1.0	1.4	1.9	4.0	10.1	1.8	0.0	6.4	19.4	7.3
1300-1400	Pro	0.0	47.5	27.2	1.7	7.0	6.4	0.0	7.0	1.6	1.6
	Ocp	0.0	1.5	1.6	2.7	10.5	1.5	0.0	1.1	16.6	7.3
1400-1500	Pro	0.0	56.7	22.5	2.0	2.7	8.2	0.0	4.1	1.9	1.9
	Ocp	0.0	1.3	1.8	6.7	13.8	1.2	0.0	4.0	12.2	4.3
1500-1600	Pro	1.8	64.0	10.6	2.8	3.2	6.0	0.5	8.7	1.3	1.2
	Ocp	1.0	1.5	1.7	9.3	14.6	1.2	1.0	16.7	13.8	11.1
1600-1700	Pro	2.8	47.5	26.0	1.7	5.1	4.0	0.0	9.1	1.7	2.1
	Ocp	1.0	1.6	2.0	4.0	8.7	1.9	0.0	5.9	19.1	8.1
1700-1800	Pro	1.0	57.8	27.1	0.0	4.5	3.5	0.0	3.0	1.5	1.5
	Ocp	1.0	1.4	2.1	0.0	11.8	1.1	0.0	2.8	22.7	13.1
1800-1900 Peak hour	Pro	3.0	50.8	32.1	0.5	4.4	3.5	0.5	2.5	1.5	1.4
	Ocp	1.0	1.5	1.8	2.0	12.0	1.9	1.0	6.8	22.2	7.6
1900-2000	Pro	1.0	56.3	32.0	0.0	3.8	1.4	0.0	2.9	1.8	0.8
	Ocp	1.0	1.6	1.9	0.0	10.5	1.3	0.0	9.5	20.2	6.0
2000-2100	Pro	0.0	49.2	37.4	0.0	7.3	1.5	0.0	0.7	2.2	1.7
	Ocp	0.0	1.3	1.8	0.0	6.2	1.0	0.0	28.0	10.0	4.0
2100-2200	Pro	2.3	56.1	29.6	0.0	6.2	0.8	0.8	0.8	2.5	0.8
	Ocp	1.0	1.8	1.9	0.0	5.6	1.0	1.0	10.0	9.8	5.8
2200-2300	Pro	1.7	59.9	28.3	0.0	6.7	0.8	0.0	0.0	2.7	0.0
	Ocp	1.0	1.3	1.9	0.0	6.6	1.0	0.0	0.0	9.9	0.0
16 hours	Pro	1.4	55.3	24.1	1.6	5.0	4.6	0.2	4.6	1.9	1.4
	Ocp	1.0	1.5	1.9	5.4	10.4	1.5	1.3	7.6	17.6	8.4

Legend

- Pro.** Proportion of vehicles in % (Sum may not add up to 100% due to figure rounding)
- Ocp.** Average occupancy of vehicles
- M&H** Medium and Heavy